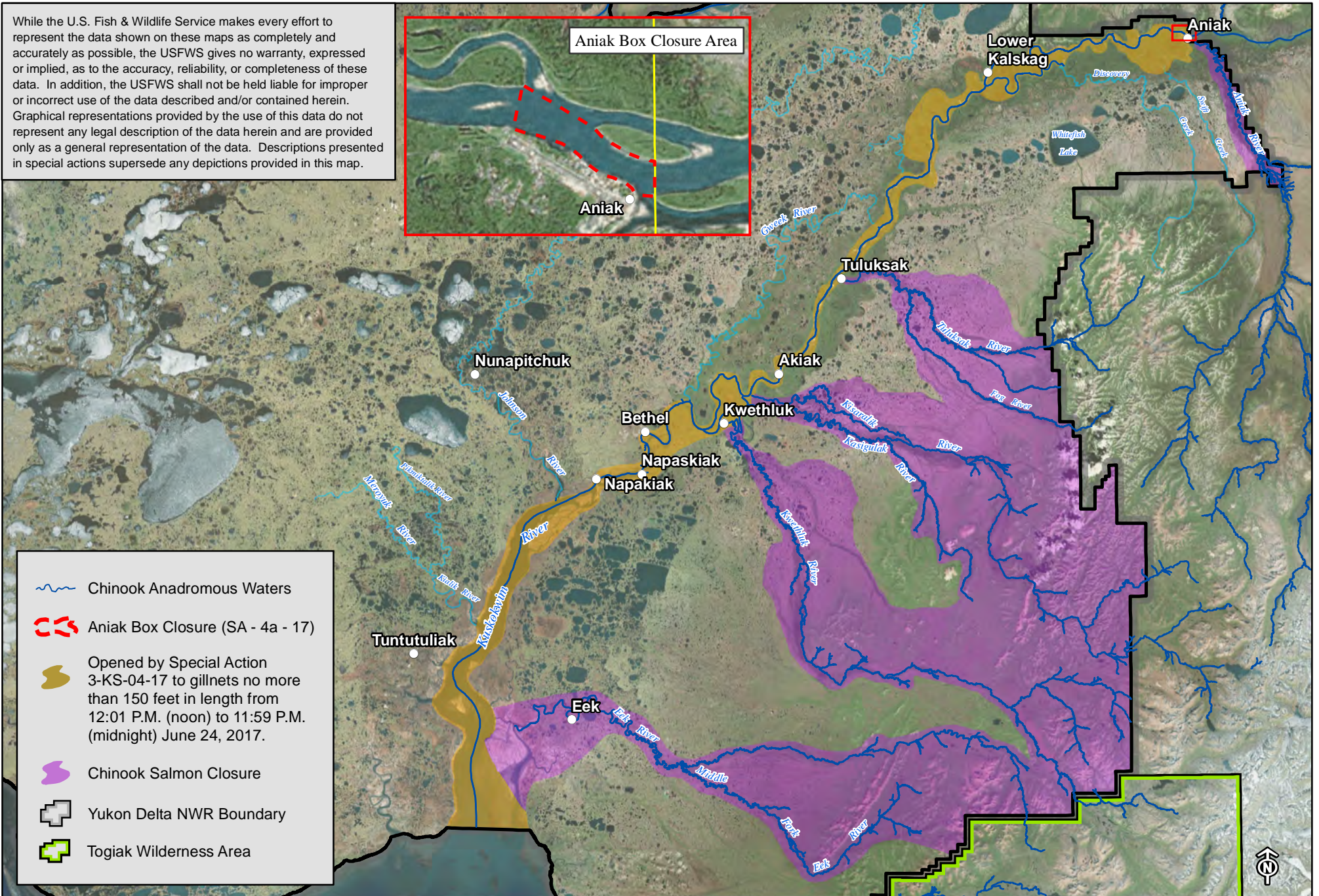










Yukon Delta National Wildlife Refuge

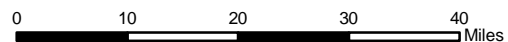
SA - 4 - 17

While the U.S. Fish & Wildlife Service makes every effort to represent the data shown on these maps as completely and accurately as possible, the USFWS gives no warranty, expressed or implied, as to the accuracy, reliability, or completeness of these data. In addition, the USFWS shall not be held liable for improper or incorrect use of the data described and/or contained herein. Graphical representations provided by the use of this data do not represent any legal description of the data herein and are provided only as a general representation of the data. Descriptions presented in special actions supersede any depictions provided in this map.



-  Chinook Anadromous Waters
-  Aniaks Box Closure (SA - 4a - 17)
-  Opened by Special Action 3-KS-04-17 to gillnets no more than 150 feet in length from 12:01 P.M. (noon) to 11:59 P.M. (midnight) June 24, 2017.
-  Chinook Salmon Closure
-  Yukon Delta NWR Boundary
-  Togiak Wilderness Area

Produced by Yukon Delta National Wildlife Refuge
Map Date: June, 2017
Basemap: ESRI World Imagery



North American Datum of 1983 (NAD83)
Alaska Albers

